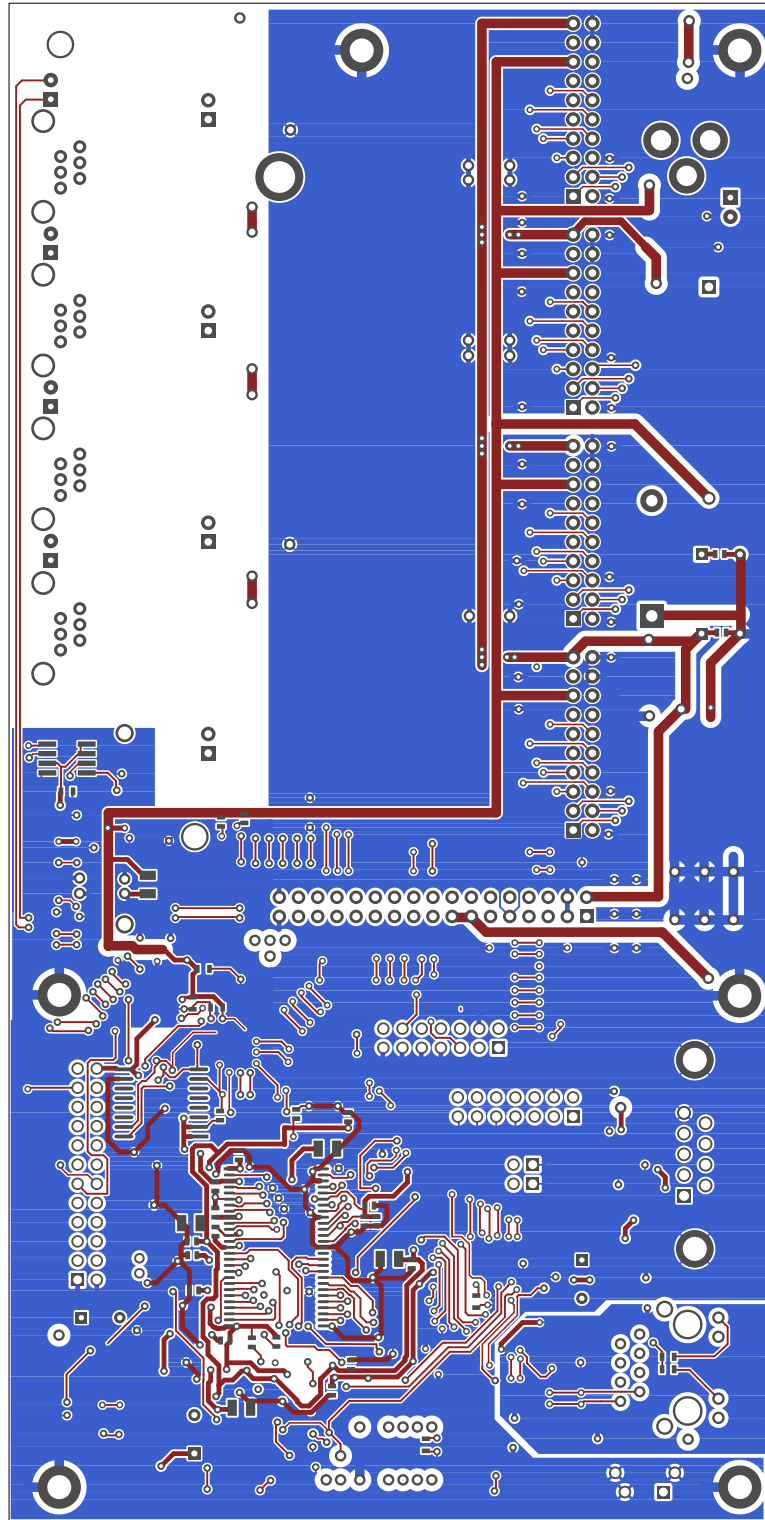
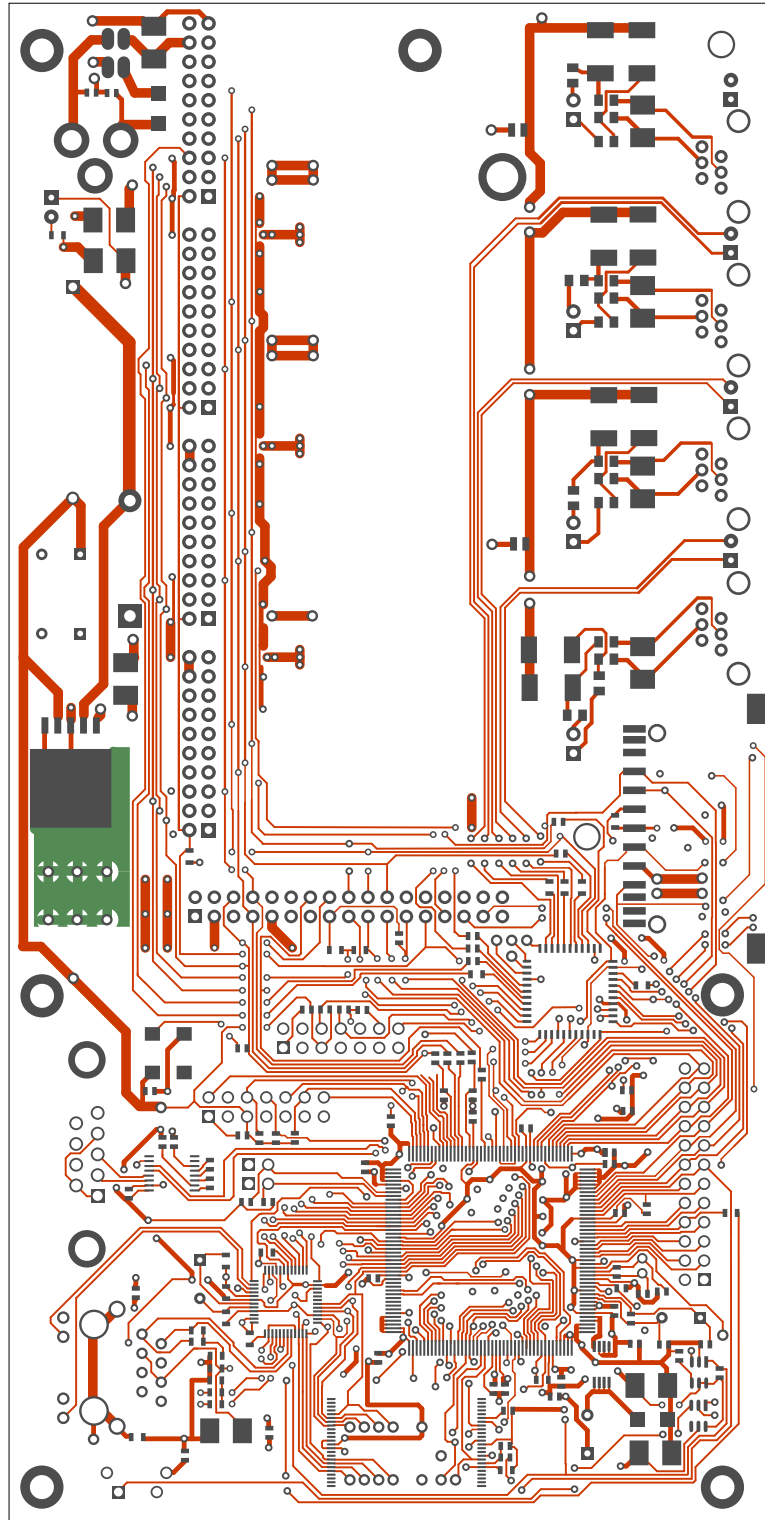
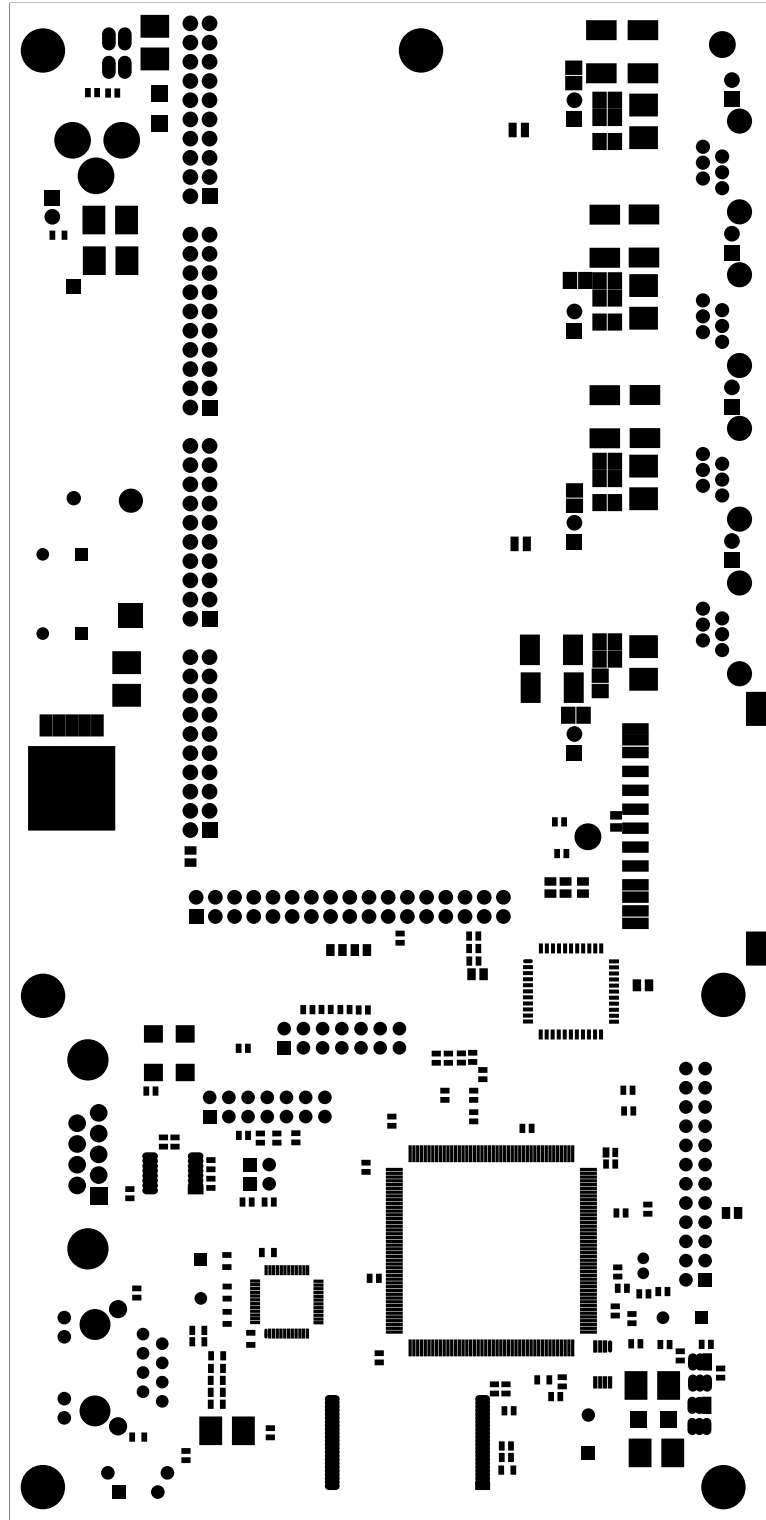


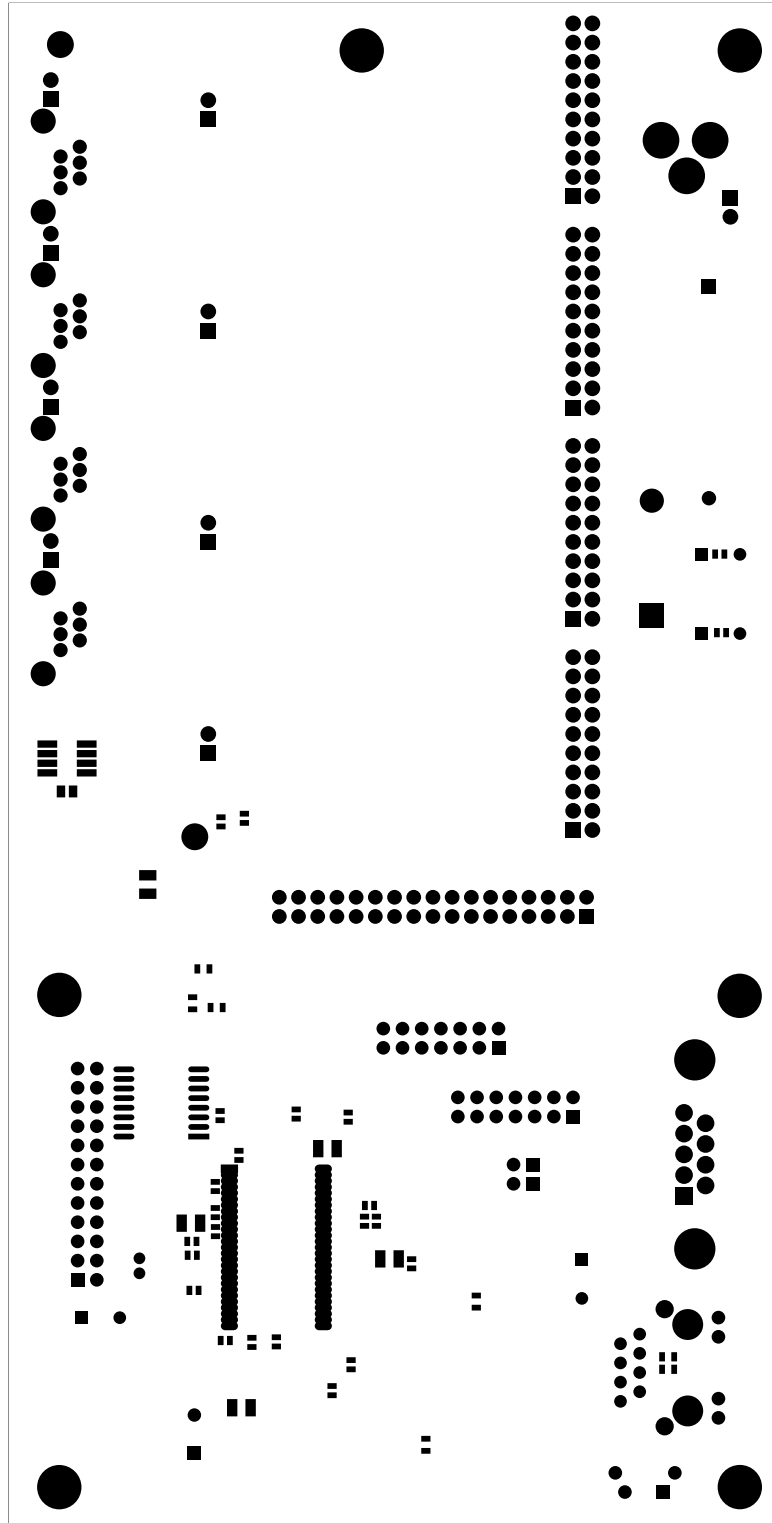
2. solder
3. component
4. componentmask
5. soldermask
6. plated-drill
7. topsilk
8. bottomsilk
9. bottompaste
10. toppaste
11. topassembly
12. bottomassembly
13. fab

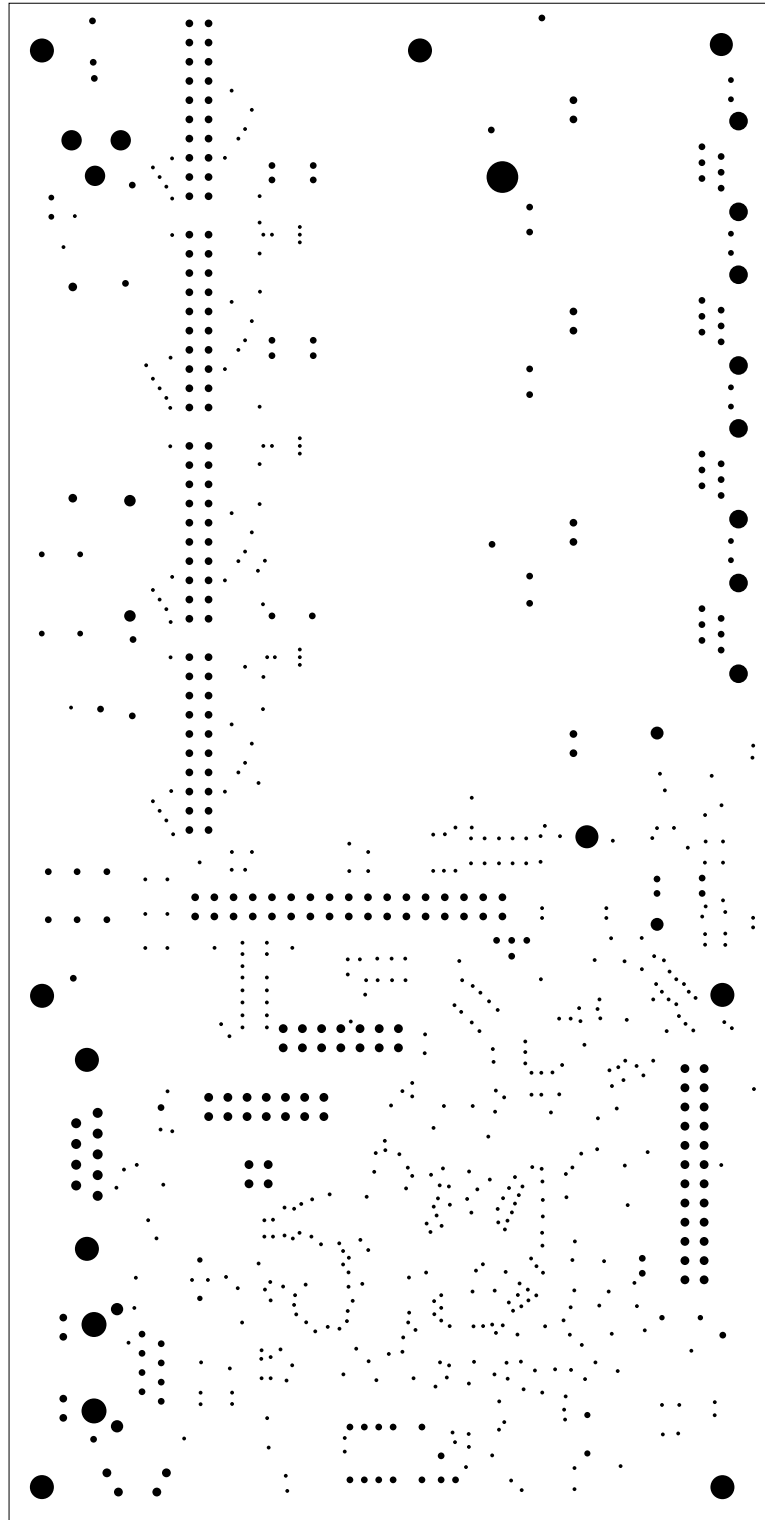


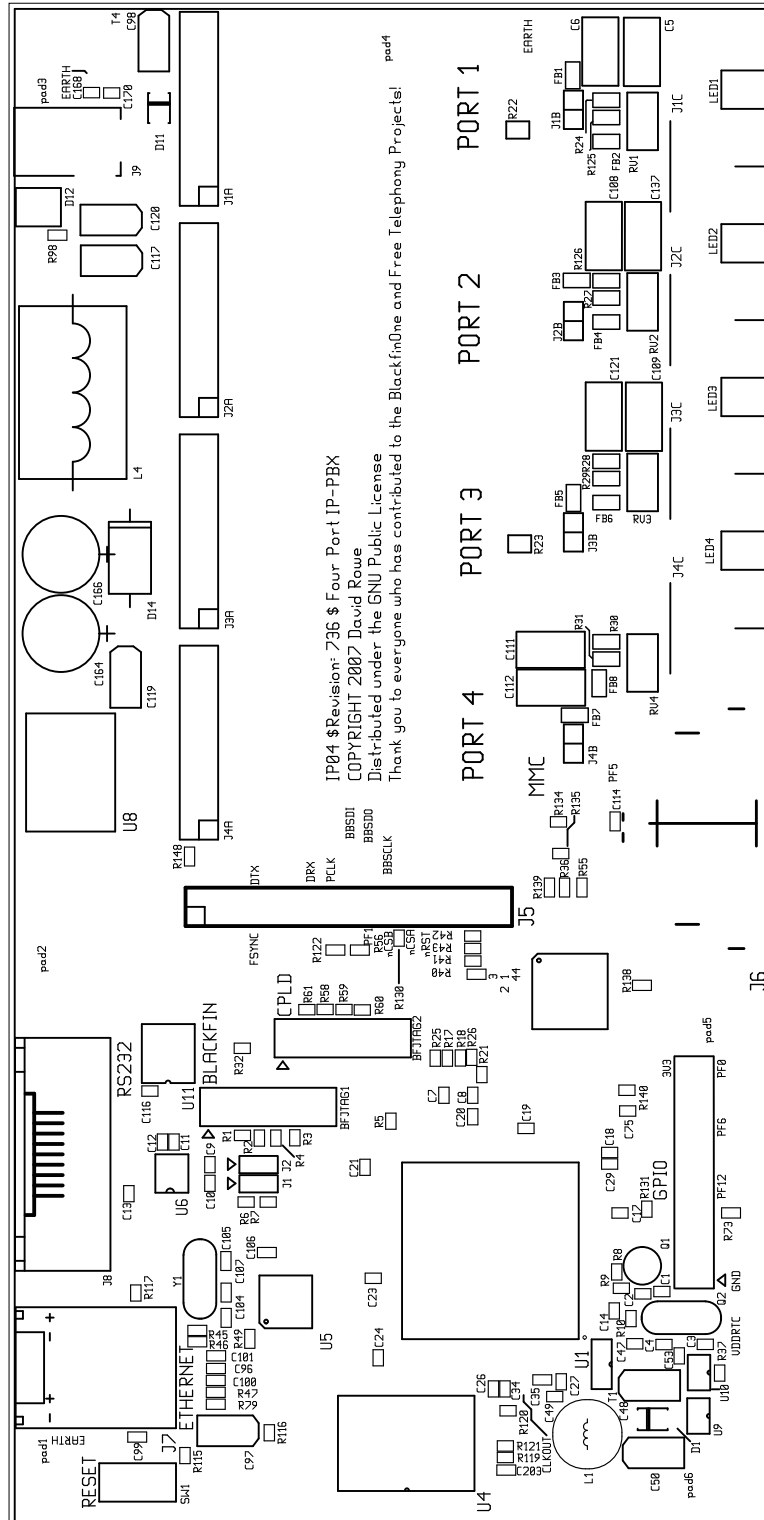
IP04 Four Port IP-PBX, back (mirrored), scale = 1:1.000  
/home/david/ip04/ip04.pcb

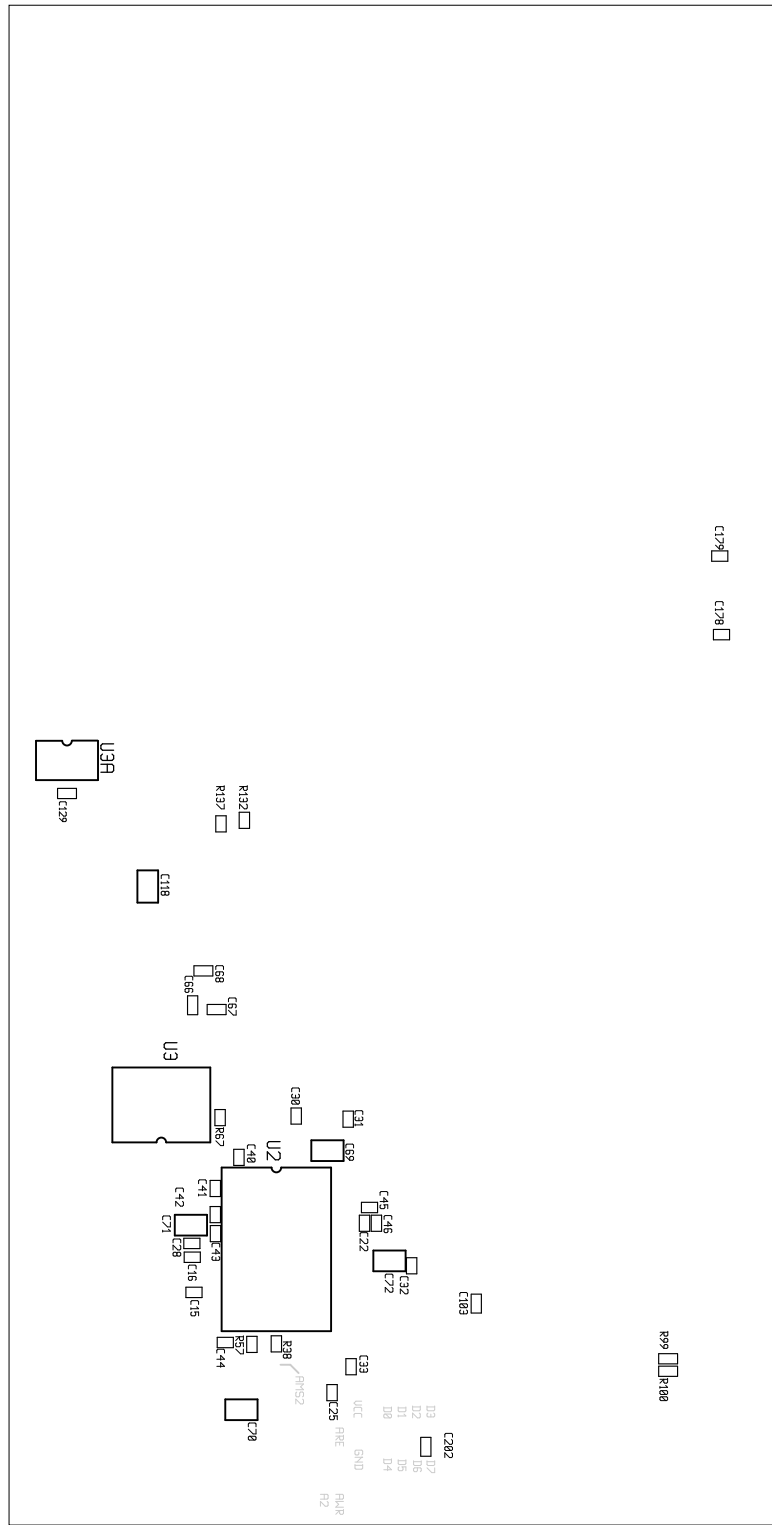




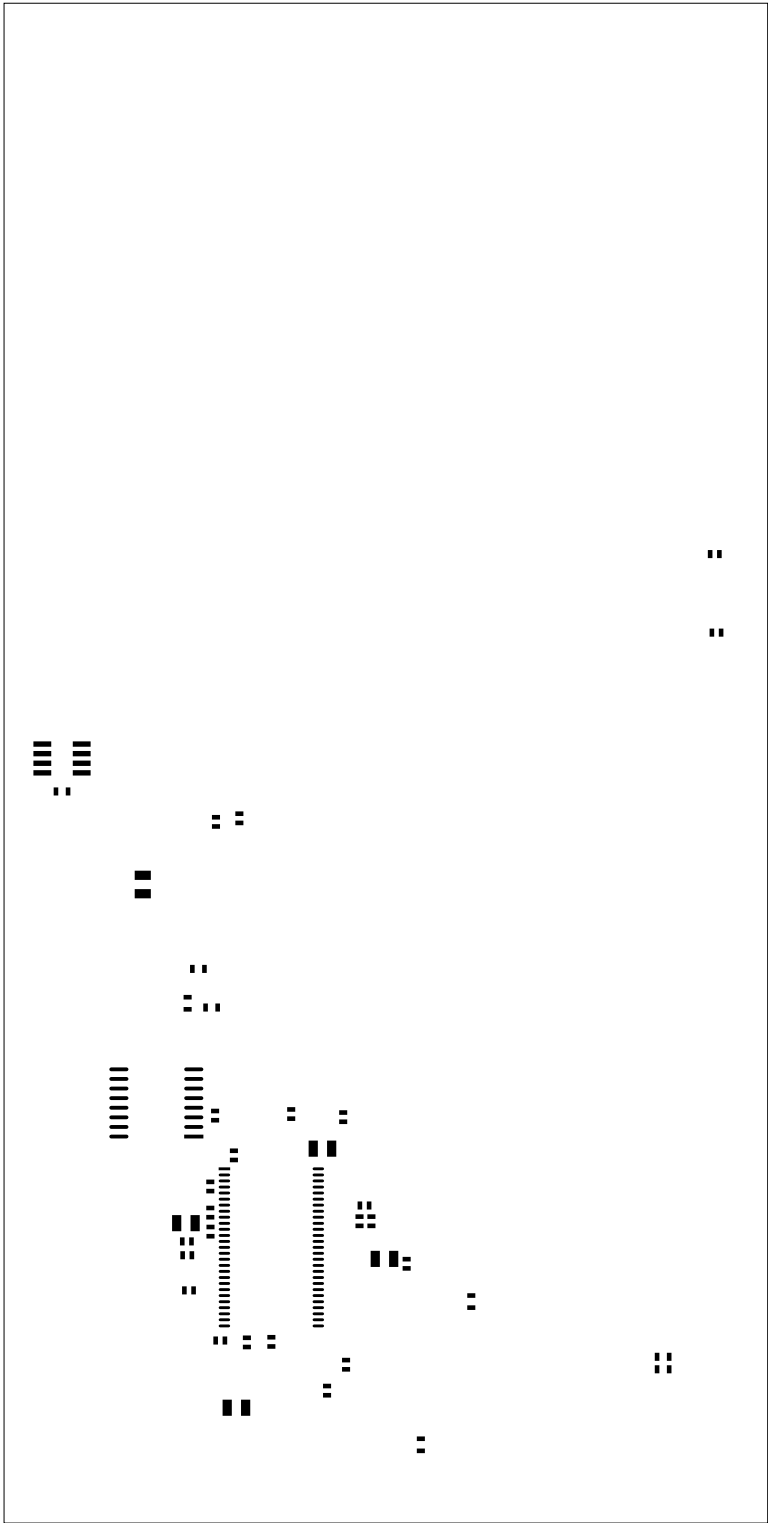






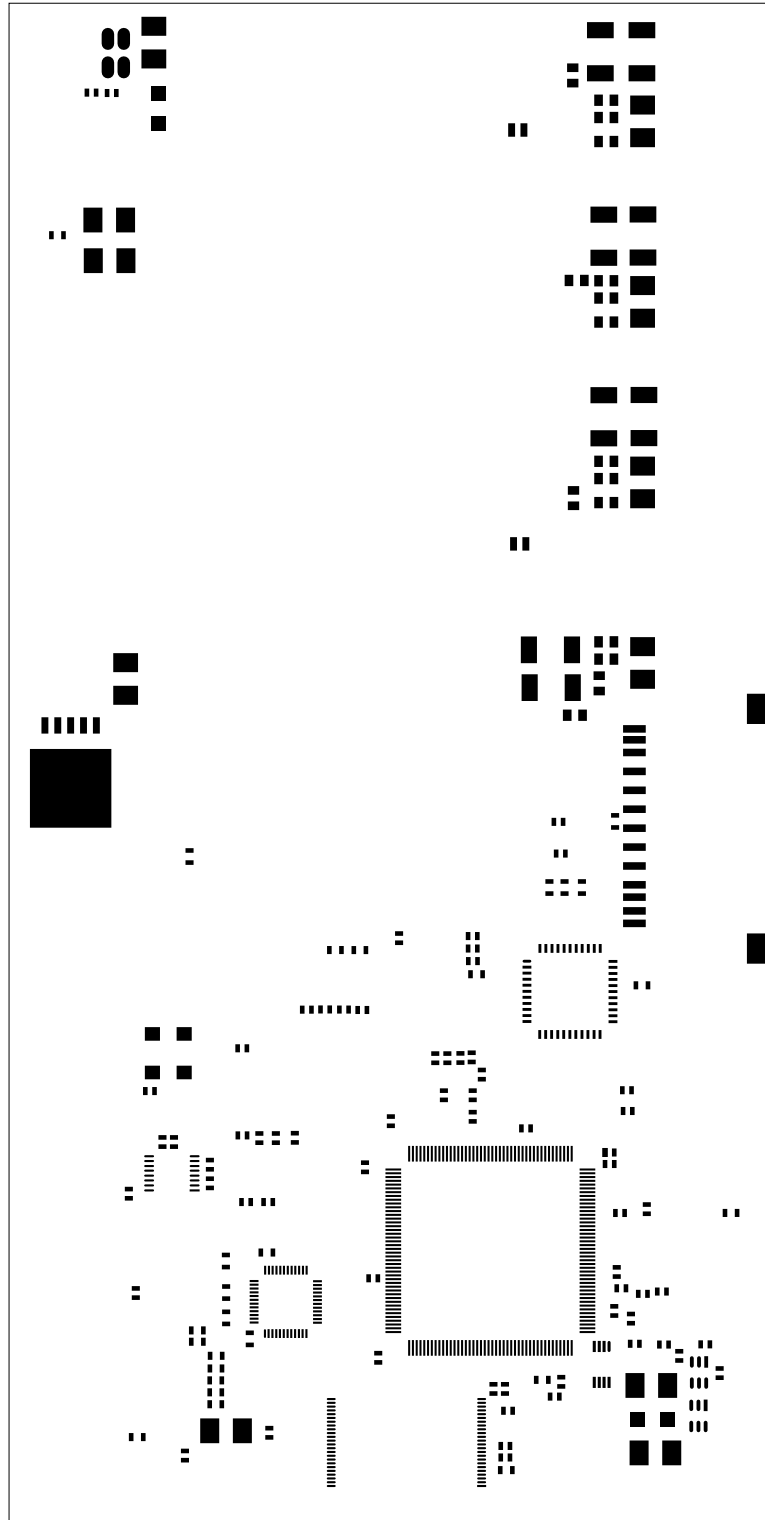


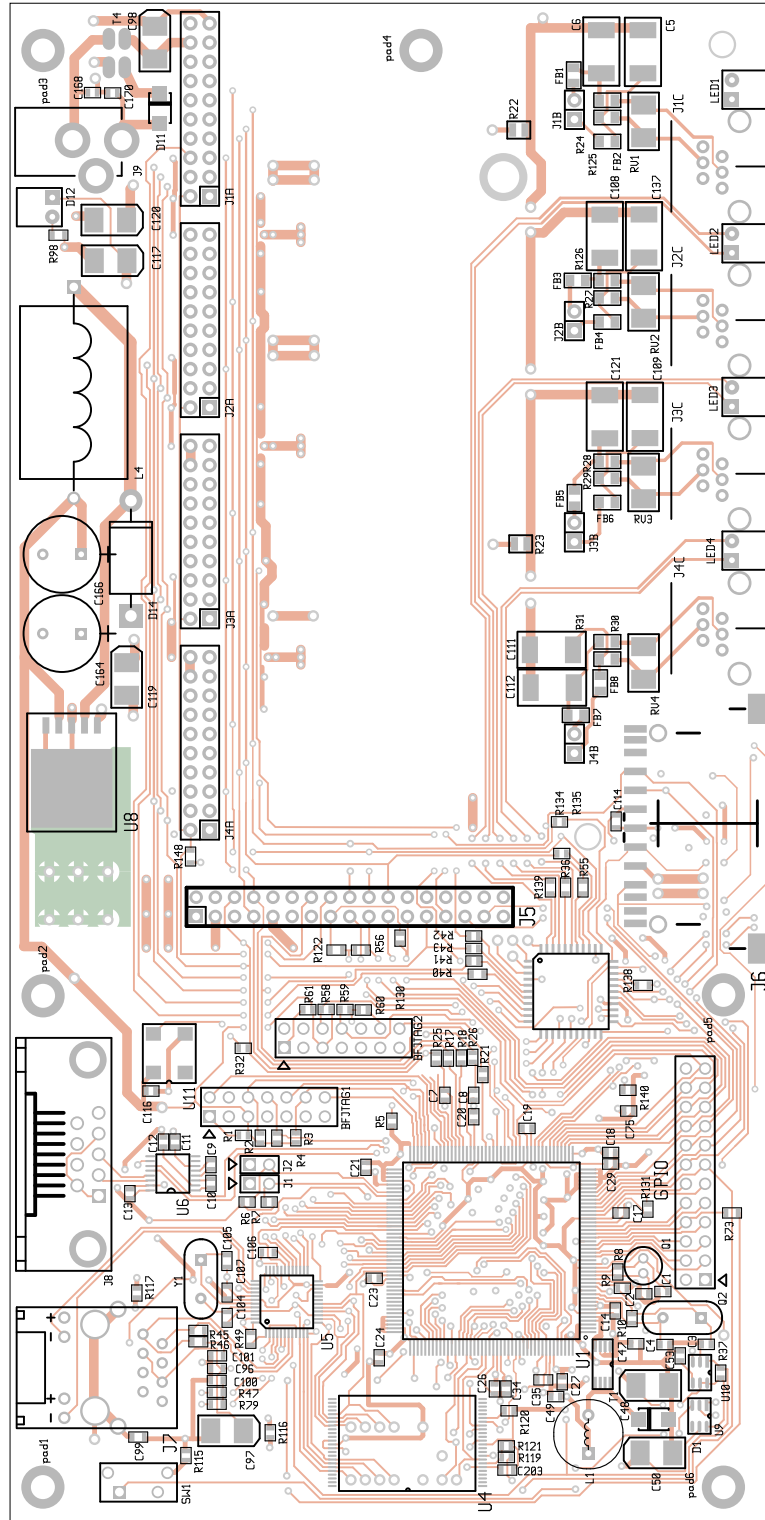




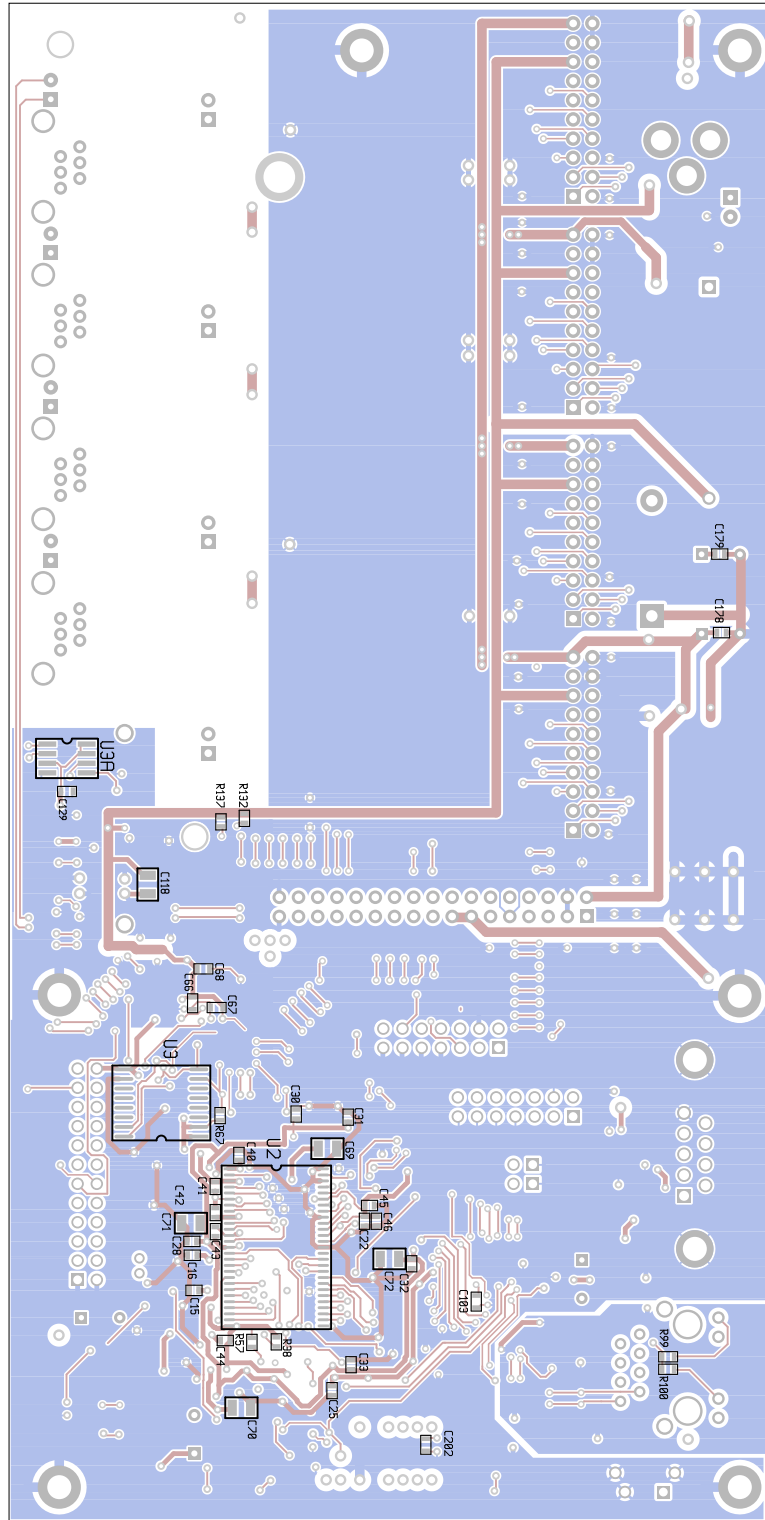
IP04 Four Port IP-PBX, backpaste (mirrored), scale = 1:1.000

/home/david/ip04/ip04.pcb





IP04 Four Port IP-PBX, front assembly, scale = 1:1.000  
 /home/david/ip04/ip04.pcb



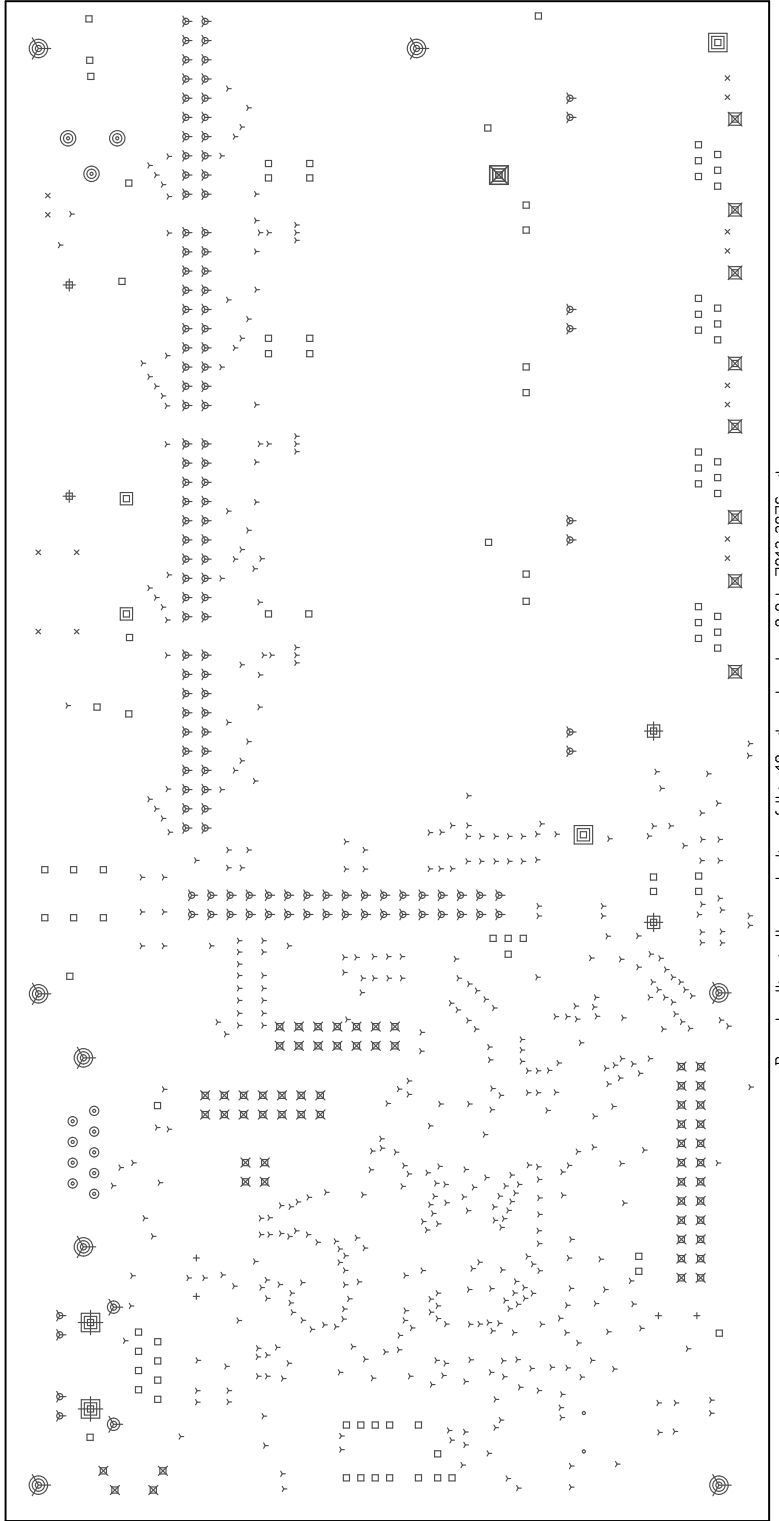
IP04 Four Port IP-PBX, back assembly (mirrored), scale = 1:1.000  
/home/david/ip04/ip04.pcb

There are 18 different drill sizes used in this layout, 820 holes total

Symbol Diam. (Inch) Count Plated?

Y	0.020	481	YES
+	0.028	4	YES
x	0.030	14	YES
o	0.032	2	YES
□	0.035	92	YES
▽	0.040	126	YES
#	0.045	2	YES
⊗	0.046	60	YES
⊙	0.052	2	YES
⊖	0.060	2	YES
⊕	0.064	2	YES
⊗	0.067	2	YES
⊘	0.097	8	YES
⊙	0.106	3	YES
⊖	0.120	2	YES
⊕	0.125	8	YES
⊗	0.130	2	YES
⊘	0.165	1	YES

Title: IP04 Four Port IP-PBX - Fabrication Drawing  
Author: David Rowe  
Date: Tue May 8 20:57:27 2007 UTC  
Maximum Dimensions: 7913 mils wide, 3976 mils high



Board outline is the centerline of this 10 mil rectangle - 0,0 to 7913,3976 mils